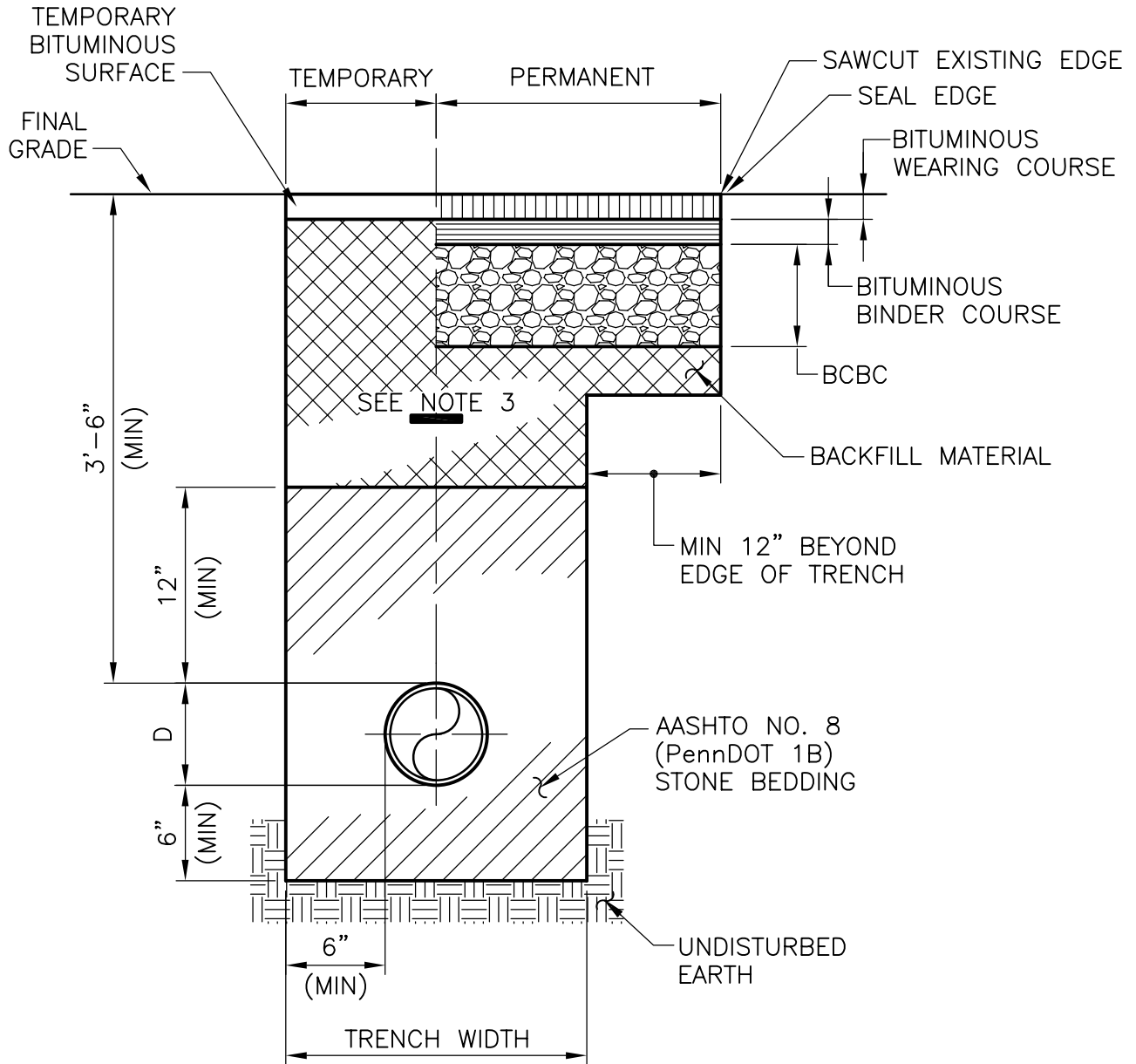


S:\5263\DETL\ DET-2 07/16/07 13:24 millercs



**NOTES:**

1. BACKFILL & PAVEMENT RESTORATION IN STATE ROADS SHALL BE AS SPECIFIED BY PennDOT.
2. BACKFILL & PAVEMENT RESTORATION IN TOWNSHIP ROADS, ACCESS DRIVES, PARKING AREAS AND LOADING AREAS SHALL BE AS SPECIFIED BY THE APPROPRIATE TOWNSHIP'S ENGINEER.
3. ADD MAGNETIC WARNING SAFETY TAPE ABOVE ALL PRESSURE SEWER LINES. TAPE SHALL BE PLACED DIRECTLY ABOVE PIPE CENTERLINE, 12-18 INCHES BELOW FINISHED GRADE.

**PAVEMENT RESTORATION**

**DETAIL**

NO SCALE

