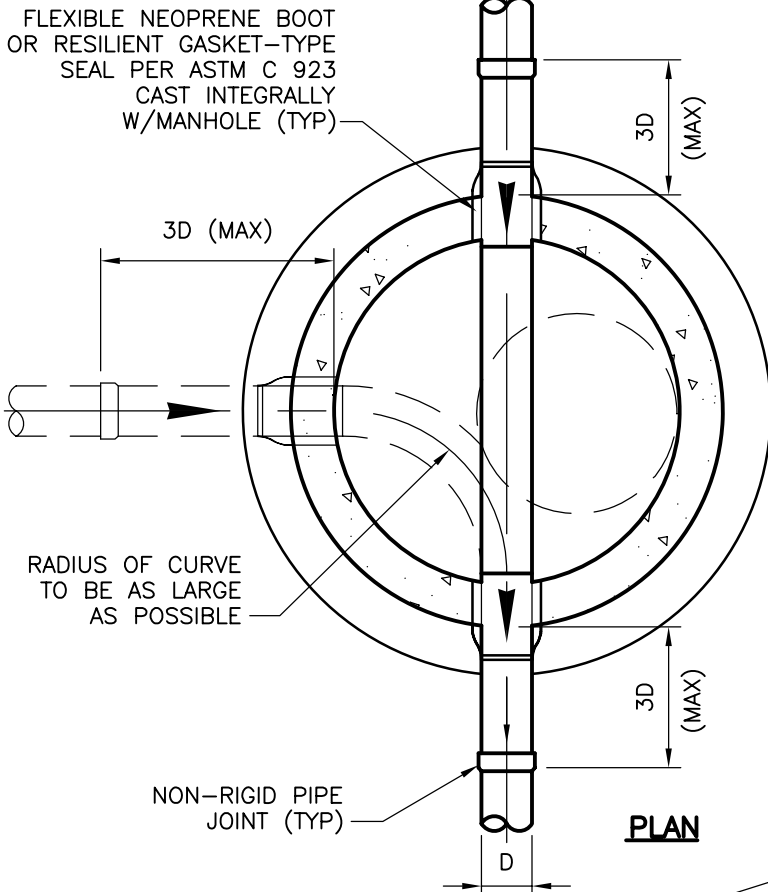
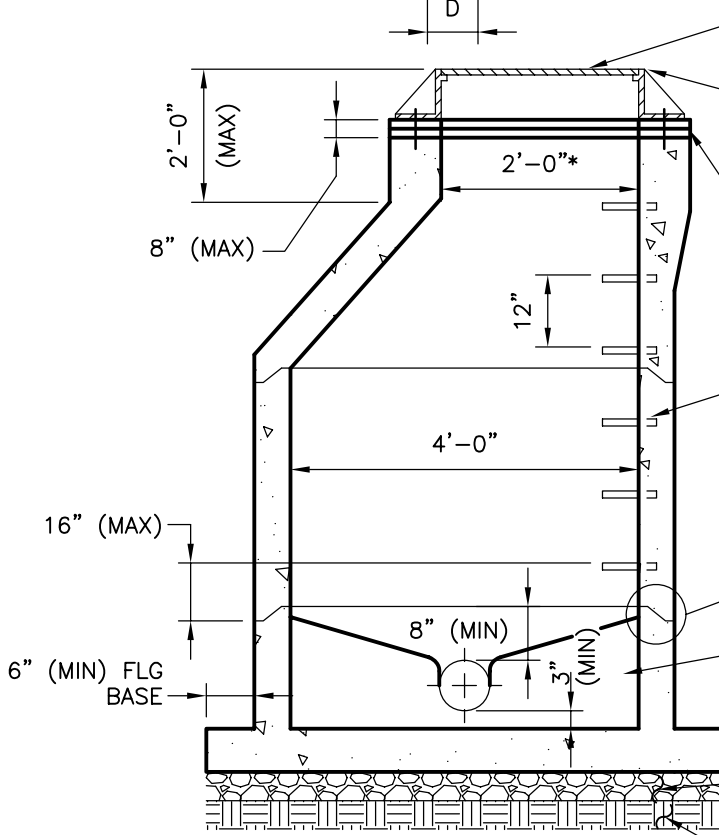


S:\5263\DETL\ DET-13 07/23/07 11:36 millercs



- NOTES:**
1. ALL PRECAST REINFORCED CONCRETE MANHOLE SECTIONS SHALL COMPLY WITH ASTM C-478.
 2. CEMENT SHALL BE TYPE II OR III, AIR ENTRAINED, WITH 4,000 psi AT 28 DAYS.
 3. REINFORCEMENT SHALL BE GRADE 60 PER ASTM A-615.
 4. 24" DIA CAST IRON FRAME AND COVER PER ASTM A-48, CLASS 30, FOR H-20 LOADING.
 5. CAST IRON FRAME TO BE BOLTED TO MANHOLE WITH 5/8" ANCHOR BOLTS.
 6. CASTING AND GRADE RINGS TO BE SEALED TO MANHOLE WITH PREFORMED PLASTIC SEALING COMPOUND.
 7. ALL JOINTS SHALL BE SEALED WITH EITHER TWO RINGS OF PREFORMED PLASTIC SEALING COMPOUND OR ONE O-RING GASKET AND ONE RING OF PLASTIC SEALING COMPOUND.
 8. COAT MANHOLE EXTERIOR WITH DAMP PROOFING (PROMASTIC 900 COAL TAR).
 9. COAT MANHOLE INTERIOR WITH H2S CORROSION PROTECTION (PRO GUARD PROCOAT 2228 WHITE EPOXY).
 10. PRECAST CONCRETE GRADE ADJUSTMENT RINGS SHALL BE ONE PIECE (NO SEMI-CIRCULAR SECTIONS) AND SHALL HAVE A MINIMUM THICKNESS OF 2 INCHES.

PLAN



- MANHOLE FRAME AND COVER (WATERTIGHT (WT) WHERE INDICATED ON DRAWINGS)
- AT FINISHED GRADE IN PAVED AREAS, 12" TO 18" ABOVE FINISHED GRADE IN UNPAVED AREAS OR AS APPROVED BY ENGINEER
- PRECAST OR CAST-IN-PLACE CONCRETE OR COMPOSITE GRADE RINGS (SEE NOTE 10)
- * MINIMUM CLEAR OPENING SHALL BE AS INDICATED OR EQUAL TO SEWER PIPE SIZE, WHICHEVER IS LARGER.
- MANHOLE STEP - 1/2" STL REINFORCING BAR ENCASED IN COPOLYMER POLYPROPYLENE PLASTIC
- FORM CHANNEL TO FULL DEPTH OF PIPE w/ CONCRETE AND PROVIDE SMOOTH FINISH. BENCH SHALL HAVE MIN 1"/FT AND MAX 2"/FT SLOPE
- 6" AASHTO NO. 8 (PennDOT NO. 1B) STONE BEDDING
- UNDISTURBED EARTH

SECTION

PRECAST CONCRETE MANHOLE

DETAIL

NO SCALE

